

Duolok[®] Tube Fittings

Duolok tube fittings are designed, manufactured, and quality-controlled to be fully interchangeable with the Swagelok[®] brand of tube fittings, having identical

- Dimensions,
- Flow characteristics,
- Construction materials,
- Pressure ratings, and
- Series number.

To provide a reliable, leak-proof connection in instrumentation and process tubing systems, Duolok tube fittings consist of four precision-machined components: **Body ❶**, **Front Ferrule ❷**, **Back Ferrule ❸**, and **Nut ❹**.

Lifetime Warranty

Duolok tube fittings are covered by a lifetime limited warranty. Visit www.mySSP.com for details.



8250 Boyle Parkway
Twinsburg, OH 44087 U.S.A.
P: 1.330.425.4250

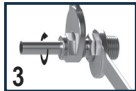
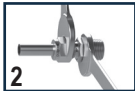
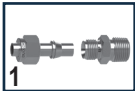


www.mySSP.com

Duolok[®] Tube Fittings

INSTALLATION INSTRUCTIONS

1. Remove the tube fitting from protective bag.
2. Fully insert the tube into the Duolok tube fitting body, then hand tighten the Duolok nut. See Figure 1, below.
3. While holding the fitting body stable with a back-up wrench, scribe the nut for a reference point and wrench-tighten 1 and 1/4 turn for sizes 1/4" - 1" (Metric 6mm - 25mm) and 3/4 of a turn for sizes 1/16" - 3/16" (Metric 3mm - 5mm). See figures 2 & 3.



IMPORTANT! SSP recommends 3/4 in. and larger tube fittings be preswaged using a hydraulic swaging tool.

ILDII-23A